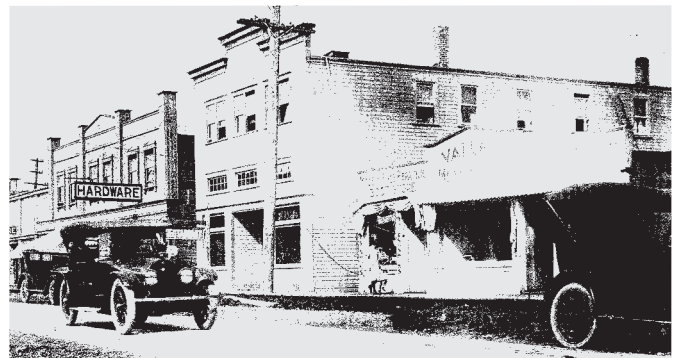


City of Langley History

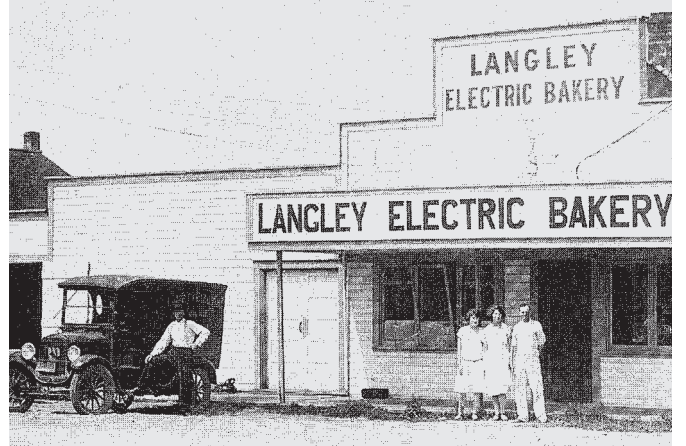


Long the home of Sto:lo First Nation people, the Langley area first came to the attention of Europeans in 1824 when James MacMillan and his party were scouting for a new Hudson's Bay Company post. MacMillan's party paddled up the Nicomekl River from Boundary Bay then followed an ancient Indian portage route to the Fraser River where Fort Langley was established in 1827. Portage Park, at the foot of 204 Street on the Nicomekl River, commemorates the arrival of European explorers in the area.

Thomas Langley, a director of the Hudson's Bay Company. Today's Innes Corners Plaza at the corner of Fraser Highway and Glover Road recalls the City of Langley's origins as a crossroads settlement.



Following the proclamation of the Crown Colony of British Columbia at Fort Langley in 1858, European settlers began to arrive in the area. Among the first to arrive were Adam and William Innes in the 1870's who purchased land at the junction of Smuggler's Trail (now Glover Road) and Yale Road (now Fraser Highway). "Innes Corners" gradually grew into a settlement and improvements to the Yale Road (connecting New Westminster with the Fraser Canyon) in 1895 and the arrival of the B.C. Electric Railway in 1910 contributed to its importance. Innes Corners was later renamed "Langley Prairie" after



Langley Electric Bakery, circa 1922-1928



let us show you around!

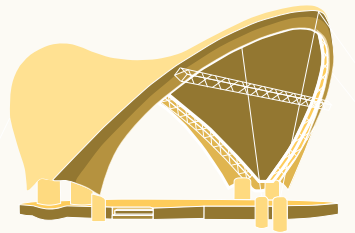
We're proud of the more than 600 unique shops, services, restaurants and attractions located in our beautiful downtown. There's always something new and fascinating to discover in Downtown Langley - we're so glad you've joined us.

If there's anything you need, just let us know...



T 604 539 0133 | downtownlangley.com

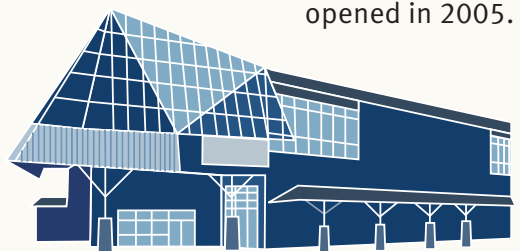
Downtown Langley Landmarks



Langley Spirit Square
A covered performance platform for concerts and other public events, Langley Spirit Square was completed in 2009. Its striking stretched-fabric roof is a memorable feature of Douglas Park.

Cascades Casino/Coast Hotel & Convention Centre

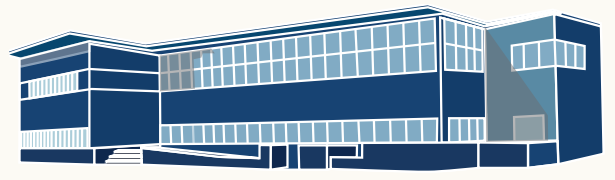
This full service casino with its 420-seat Summit Theatre, 6-storey, 77-room hotel and 26,000 square foot convention centre is a major business and entertainment destination. Located next to Innes Corners Plaza, Cascades Casino/Coast Hotel & Convention Centre opened in 2005.



St Joseph's Roman Catholic Church
The church's 75-foot high steeple points the way to Downtown Langley from the City's eastern approaches. This 16,000 square foot building was completed in 2001 for St. Joseph's Parish.

Langley City Hall & Library

Constructed on the site of the original City Hall, this 35,000 square foot building opened in 2000 and anchors a planned civic centre complex in the heart of Downtown Langley.



Downtown Langley Parking

On-Street Parking
Free street parking, maximum two or three hours (as indicated by sign).

Off-Street Parking
Free parking in City of Langley downtown parking lots, maximum two or three hours (as indicated by sign). Please refer to Downtown Map for lot locations.

- Public Car Parks
- Private/Shopping Car Parks